

LINDHS SYSTEM

8001, Eldrag



SYSTEM 8001

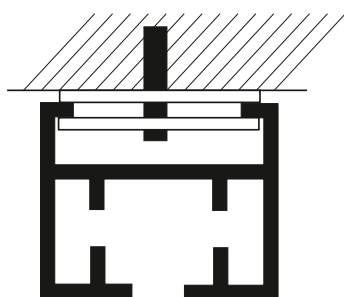
Elektriskt system som kan kombineras med flera motorstyrkor alternativt manuellt system med kulkedjefdrift.

Eldrag 8001 kräver auktoriserad elinstallatör.

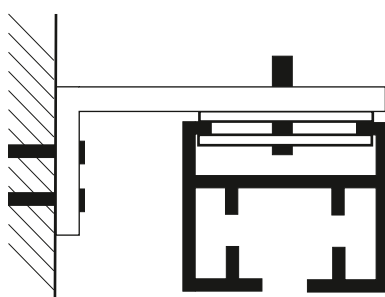
För bästa funktion rekommenderar vi ridåband 9886 och ridåkrok 9881 till sömnad och montage av gardin.

FAKTA

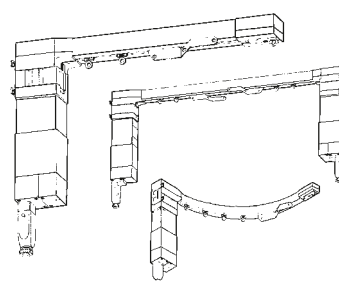
Mått skena:	b x h 32x26 mm
Material:	Aluminium
Färg:	Vit (RAL 9016)
Bockas:	Ja, radie 350 mm
Montering:	Takfäste, vägg



Takfäste



Väggfäste

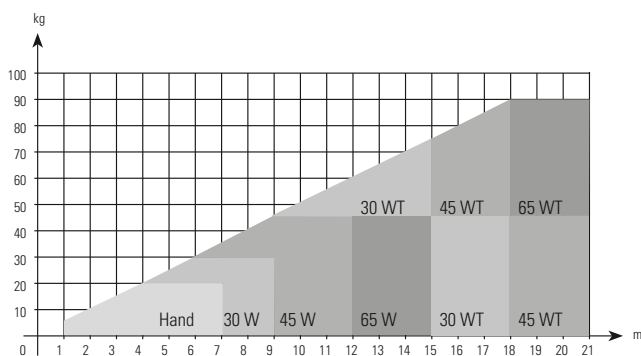
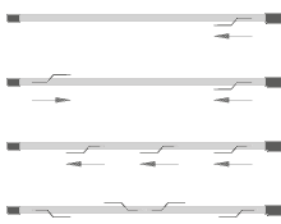


Motor placeras i änden av skenan vid singel- och tandemssystem.

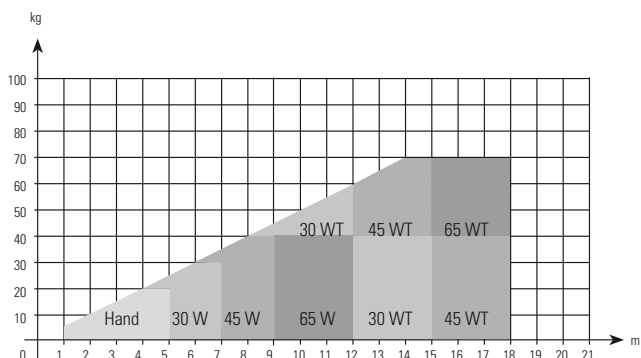
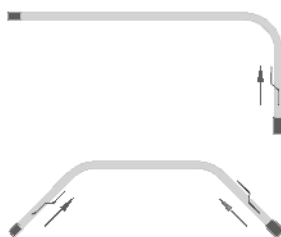
ELDRAG 8001 SKENA

Översikts system 8001

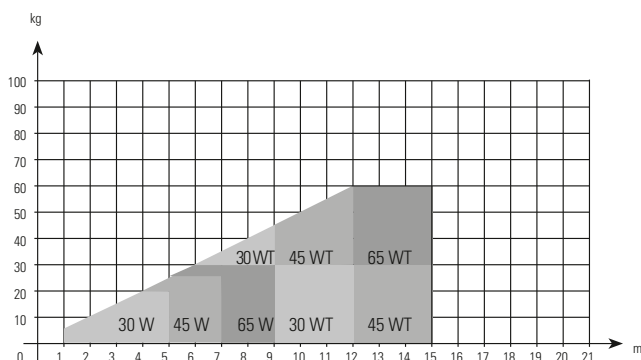
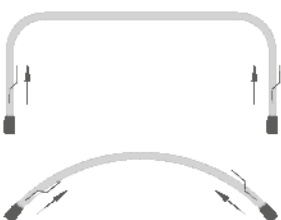
Typ:
Rakt system



1 bockning 90° eller 2 bockningar 45°



2 bockningar 90°



Begränsningar:

Max höjd på gardin 5 m
 Vikt av textil max 500 g/m²
 Mängden textil får ej överstiga dubbel längd skena
 Max belastning per glid 500 g
 Standard 10 glid/meter

W Watt
 WT Watt tandem

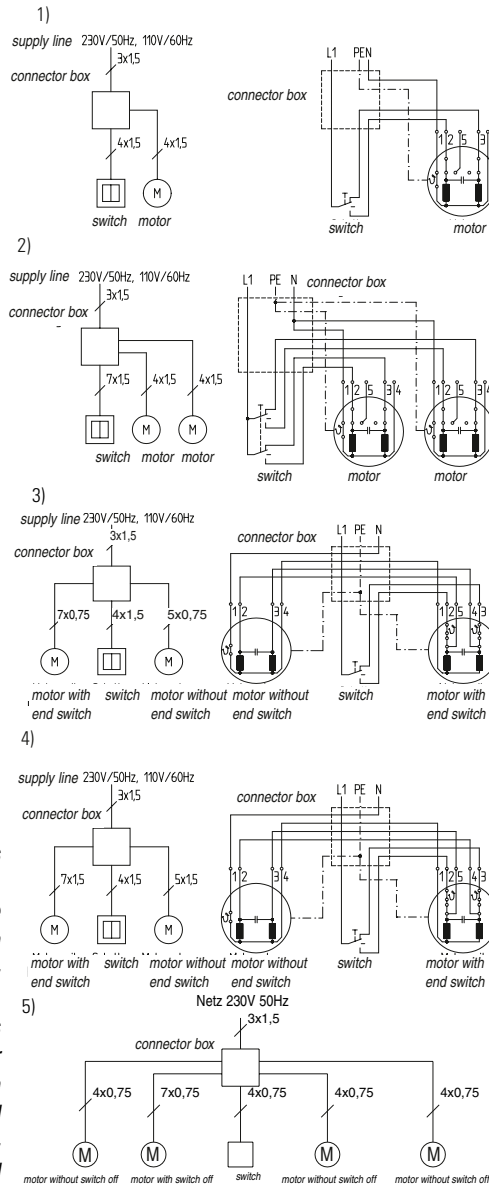
Bockad skena: Bredden av gardinen = Skenas längd i utsträckt läge.
 Minsta bockningsradie 350 mm

ELDRAG 8001 SKENA

Connection motors

- 1) Individual blind with single motor
5060, 5080, 5066 Single
- 2) 2 blinds with single motor
5060, 5080, 5066 Single
- 3) Individual blind with tandem motor
5060, 5080
- 4) Individual blind tandem
5066, 5070, 5090
- 5) Individual blind doubletandem
5066, 5070

Attention:
installation diagrams
for VDE approved
motors only!



Connexion instructions for sundrape® electric motors

Connexions and supply lines have to be passed on site by authorized electricians according to VDE (German Electrical Engineering Association) and local EVU (electric supply company) instructions.

For controls of two and more motors a group control is required. Cable laying plans and wiring diagrams for group and central controls as well as remote controls can be submitted on request. Switch off unused lines and systems before you connect the motor. Place push-buttons above a height of 1,5 m near the system. Allowed running periods and torques have to correspond with the motor's technical data.

In order to avoid backing ups of condensers of running motors, parallel connexion of two or more motors at one exit is prohibited. For decoupling purposes a separate contact for each direction of rotation is required. Use only mechanically or electrically locked switches and push-buttons. Switches and controls may not permit concurrent up and down operation! The time to change the running direction from up/down to down/up has to be at a minimum of 0,5 seconds. This applies also for programmable control devices.

